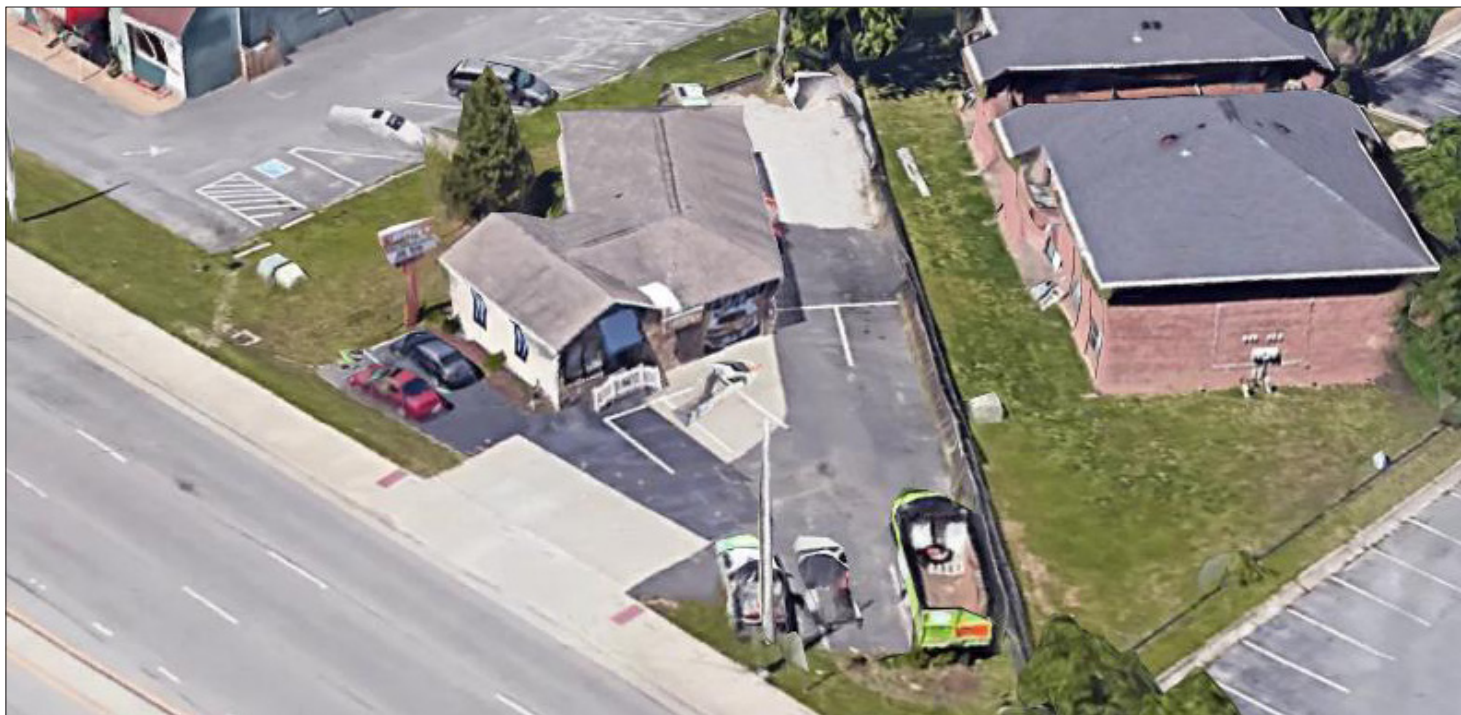


FOR SALE | 12842 A JEFFERSON AVENUE NEWPORT NEWS VA 23602

COMMERCIAL LAND.2 ACRE AND 1800 SF BLDG. ZONED C-1



PROPERTY SUMMARY:

- Approximately .2 Acre parcel with a 1,800 sf office warehouse bldg. (With some outside storage, former Betty's Plumbing Office). Located just West of Denbigh Blvd. On Jefferson Avenue across from the Lexus Auto Dealership. Other nearby properties of interest include: Casey BMW, Pearson Toyota, Hall Hyundai, Richneck Food Lion Center, Stoney Run Apartment Community, Denbigh Crossing Center, Navy Federal, Zaxby's et al.
- The property is in close proximity of Fort Eustis, Mary Immaculate Hospital, Ferguson Enterprises, and is travelled by more than 58,000 vehicles per day.

• FOR SALE \$329,000

DEMOGRAPHICS:

Radius:	1 Mile	3 Mile	5 Mile
Population:	12,165	76,650	137,169
Households:	5,439	31,810	56,460
AVG HH Income:	\$54,400	\$75,505	\$79,522



BERKSHIRE HATHAWAY

HomeServices

Towne Realty

COMMERCIAL DIVISION

ERIC BUCKLEW

Direct: (757) 404-0162

Office: (757) 481-8433

BucklewProperties@live.com

Eric.Bucklew@BHHSTowne.com

www.BucklewProperties.com



ERIC BUCKLEW

Direct: (757) 404-0162

Office: (757) 481-8433

BucklewProperties@live.com

Eric.Bucklew@BHHSTowne.com

www.BucklewProperties.com