

FOR LEASE OFFICE SPACE

2832 SOUTH LYNNHAVEN PARKWAY

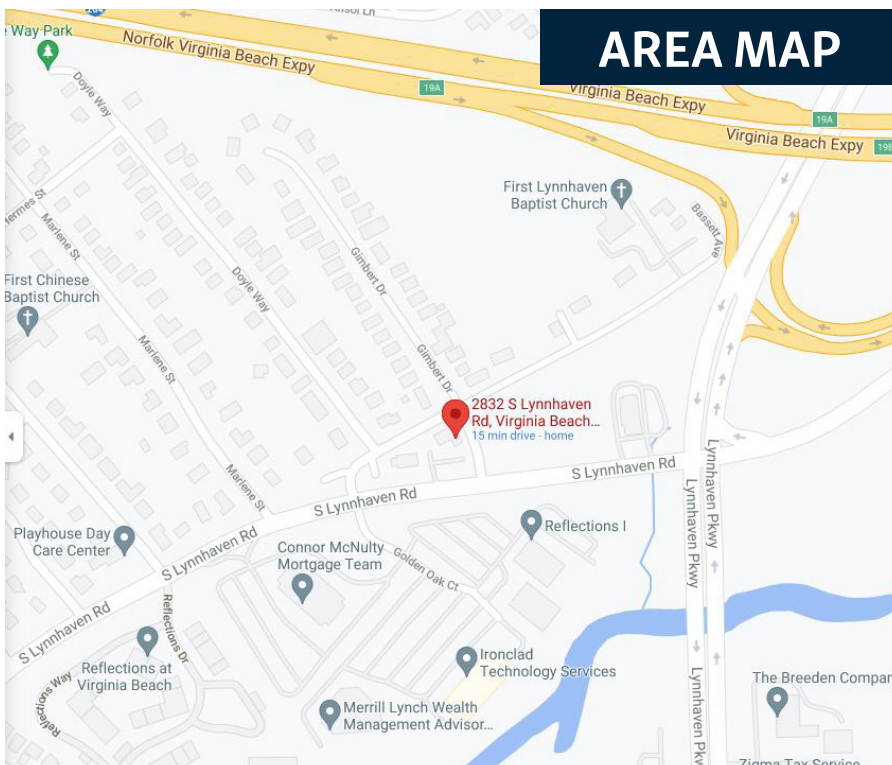


PROPERTY SUMMARY:

- TWO STORY 4300 SF OFFICE BUILDING (4 PRIVATE OFFICES)
- LYNNHAVEN SUB MARKET, ACROSS FROM REFLECTIONS OFFICE PARK
- (2) 800 SF OFFICE SPACES AVAILABLE
- **\$1200-\$1500 PER MONTH (FULL SERVICE LEASES, UTILITIES INCLUDED, NET OF JANITORIAL)**
- CONFERENCE/BOARD ROOM, AND KITCHEN/DINING ROOM, AVAILABLE FOR TENANT USE
- ALARMED BUILDING WITH 24 HOUR ACCESS



2832 South Lynnhaven Parkway | Virginia Beach 23452



ERIC BUCKLEW

Direct: (757) 404-0162

Office: (757) 481-8433

BucklewProperties@live.com

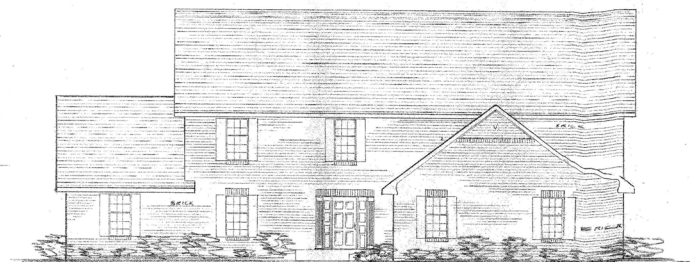
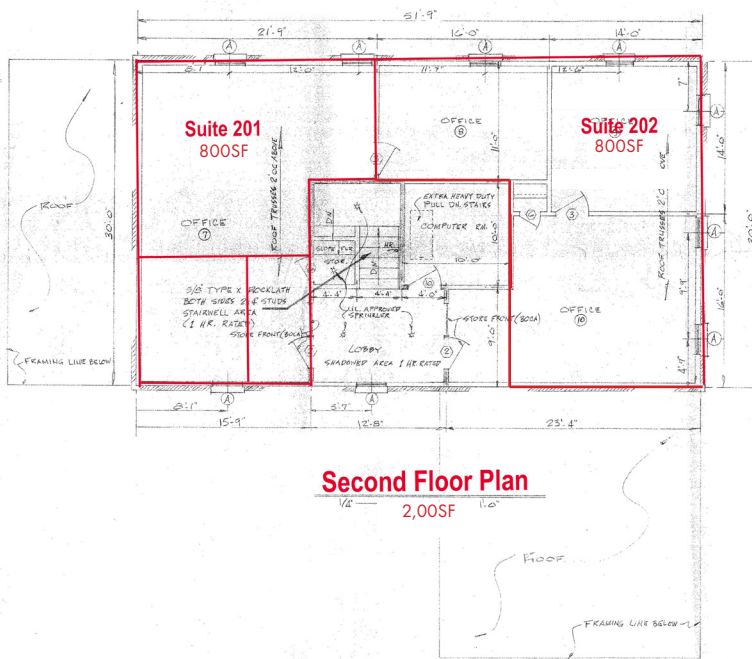
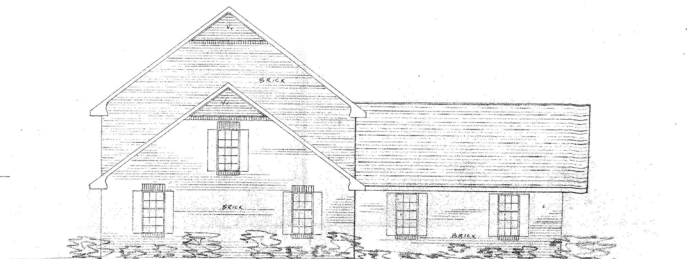
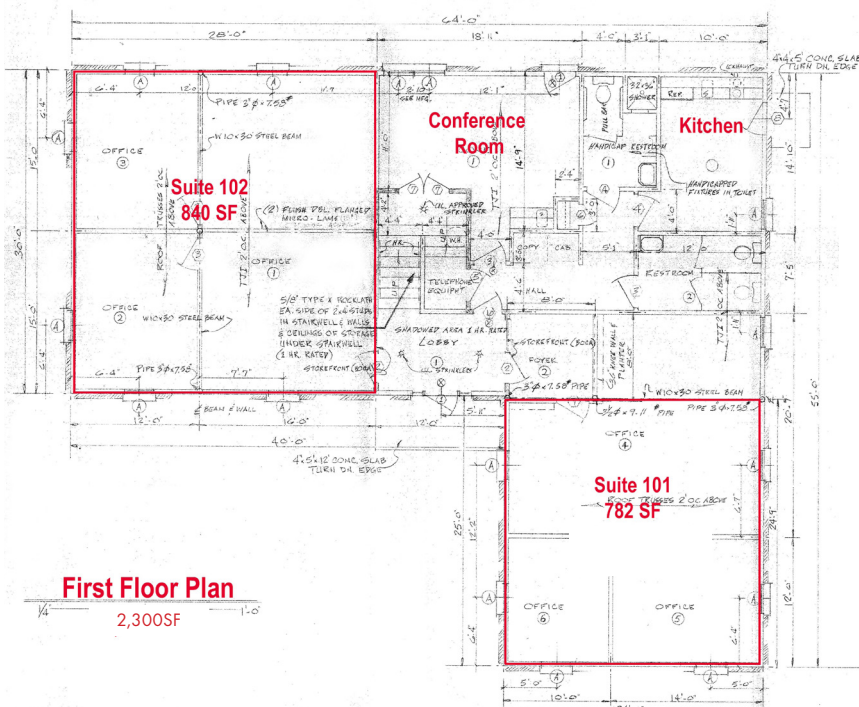
Eric.Bucklew@BHHSTowne.com

www.BucklewProperties.com

Shore Drive | 2301 Urchin Road | Virginia Beach, VA 23451 | 757-481-8433

A member of the franchise system of BHH Affiliates, LLC





BERKSHIRE HATHAWAY
HomeServices
Towne Realty

COMMERCIAL DIVISION

www.BucklewProperties.com
747-404-0162

Shore Drive | 2301 Urchin Road | Virginia Beach, VA 23451 | 757-481-8433

A member of the franchise system of BHH Affiliates, LLC



ERIC BUCKLEW