

OFFICE SPACE

FOR LEASE



3909 MIDLANDS ROAD | WILLIAMSBURG VA 23188



BERKSHIRE HATHAWAY
HomeServices

Towne Realty

COMMERCIAL DIVISION

JANET MOORE, CCIM

D: 804.467.9491

O: 757.645.4500

JANET.MOORE@BHHSTOWNE.COM

PROPERTY FEATURES

- ~700SF ON 3RD FLOOR
- ADDITIONAL SPACE AVAILABLE ON 2ND FLOOR
- PRIME LOCATION JUST OFF STRAWBERRY PLAINS ROAD, NESTLED IN A PRIVATE WOODED AREA WITH PROXIMITY TO ROUTES 199 & 321 (MONTICELLO AVENUE)
- CONVENIENTLY LOCATED NEAR NEW TOWN, SETTLERS MARKET, THE COLLEGE OF WILLIAM & MARY, WJCC COURTHOUSE AND PROFESSIONAL OFFICES
- EXTERIOR BUILDING SIGNAGE
- AMPLE PARKING CONVENIENT TO BUILDING ENTRANCE
- LANDLORD PROVIDES TRASH DISPOSAL, PROPERTY MAINTENANCE, AND LAWN CARE
- RATE: \$600/MONTH NET OF ELECTRIC AND JANITORIAL SERVICES – **PRICED TO LEASE**

DEMOGRAPHICS

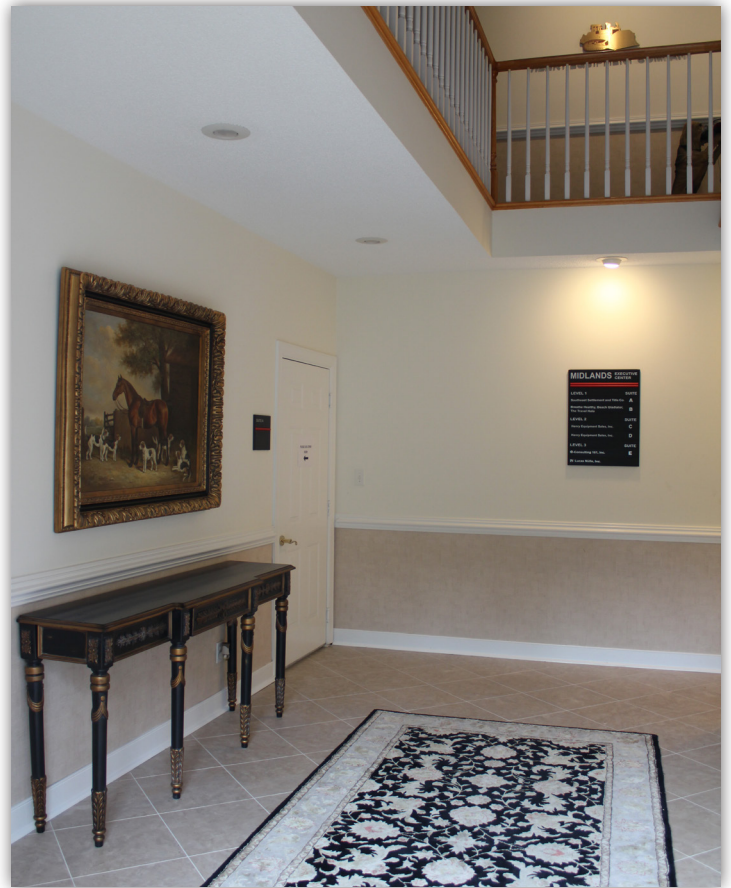
3 MI

5 MI

DAYTIME POPULATION

28,298

45,945



BUILDING FOYER

