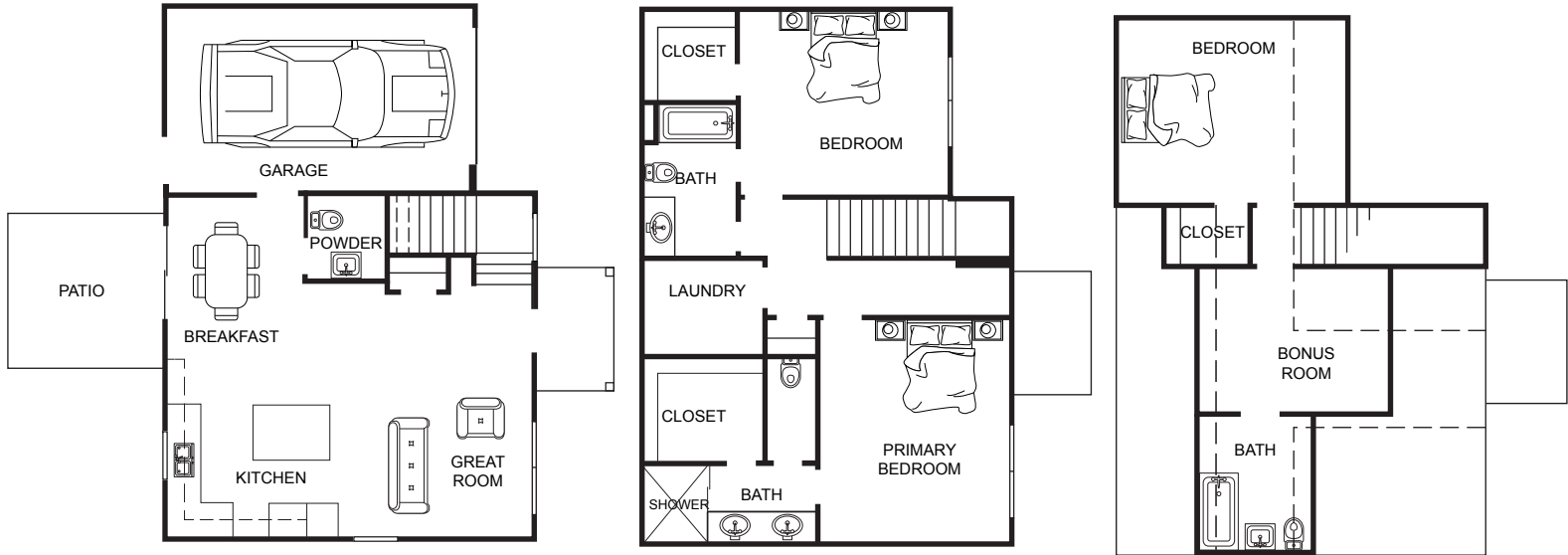


Shagbark Road

Feature Sheet



EXTERIOR

- Beautifully Appointed Exterior Features
- 30yr Architectural Shingles
- Alside Vinyl Siding
- Traditional Cornice Design
- Fiberglass Entry Doors
- CHI Garage Door, pre-wired for Opener
- Hose Bibs – Front & Rear
- Weatherproof GFI Protected Outlets
- Concrete Patio, Driveway & Walkways
- Professionally Designed & Installed Landscaping
- 11x12 Rear Patio

INTERIOR

- 3 Bedrooms, 1 Bonus Room
- Three and one half (3 ½) Baths
- Nine (9') Ceiling Height on First Floor
- Textured Drywall Finish Walls & Ceiling
- LVP throughout 1st Floor
- Stain-Resistant Carpeting with 6lb Padding in Bedrooms
- Granite Tops in Full Bathrooms
- Laundry Room with W/D Hookups
- Delta Plumbing Fixtures
- Designer Lighting Package
- Sherwin Williams Interior Paint
- Cable Outlets in Great Room, and all Bedrooms
- Electronically Wired Smoke and Carbon Monoxide Detectors
- Ceiling Fan in Great Room and Owner's Suite

GOURMET KITCHEN

- Open Concept Living Area
- Large Breakfast Area
- Custom Designed Wood Cabinetry with Soft-Closed Doors
- Granite Kitchen & Bar Tops
- Stainless Steel Whirlpool Appliance Package with Electric Range, Dishwasher and Built in Microwave
- Ice Maker Hookup
- Kitchen Pantry
- Designer Faucet with Pull Down Sprayer

OWNER'S SUITE

- Custom Designed Wood Cabinets
- Granite Vanity Tops
- Walk in Shower with Tiled Walls, Rain Can Showerhead & Glass Door
- Elongated Toilet
- Delta Fixtures & Coordinating Bath Accessories
- Spacious Walk-In Closet

ENERGY EFFICIENT FEATURES

- Multi-Zone Energy-Efficient Heating Pump & Electric Air Conditioning
- Anti-Air Infiltration "House Wrap"
- Electric Water Heater
- Insulated Double-Glazed Vinyl Windows with Tilt-Out Sash and Screens
- Insulated Energy-Efficient Fiberglass Exterior Doors
- Energy Star Appliances
- Programmable Thermostat

WARRANTY

- Full Service In-House Customer Care Department and Quality Control

Prices and specifications are based on the latest possible information available at the time of publication approval. Builder reserves the right to make changes at anytime without notice in specifications, prices, materials color, equipment & models.

Rob Mitchell • (757) 285-3139

Marketing & Sales by Berkshire Hathaway HomeServices RW Towne Realty • 1435 Crossways Blvd., Suite 100, Chesapeake, VA 23320 • 757.935.9010

©2024 BHH Affiliates, LLC. An independently owned and operated franchisee of BHH Affiliates, LLC. Berkshire Hathaway HomeServices and the Berkshire Hathaway HomeServices symbol are registered service marks of Columbia Insurance Company, a Berkshire Hathaway affiliate. Equal Housing Opportunity. Berkshire Hathaway HomeServices RW Towne Realty is an affiliate of TowneBank and licensed in the states of Virginia and North Carolina.

